



STRINE

ENVIRONMENTS



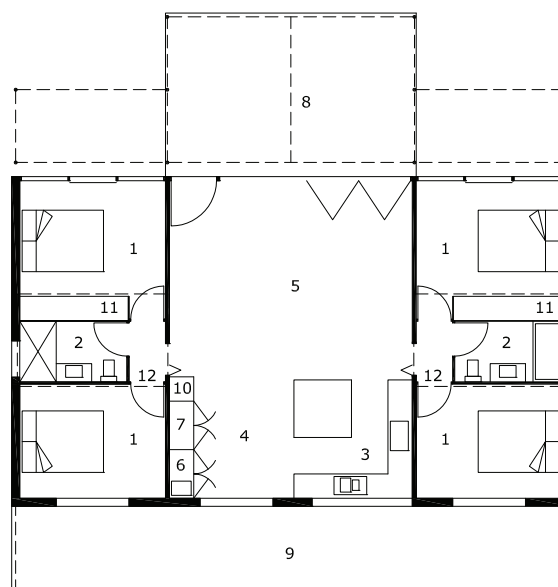
SMALL, SUSTAINABLE AND BEAUTIFUL

Designed to show that quality is more important than quantity of space! The Solstice House is an innovative sustainable living solution based on a unique model that integrates architectural design, prefabricated precast concrete and environmental construction. The house is ultra energy efficient with significantly lower running and maintenance costs over the lifetime of the house as compared with the standard home.



Solstice House

The Solstice House provides a practical solution for small blocks with every amenity that a larger house offers with a footprint of only **113m²**.



AREAS:	
RESIDENCE	112.7m ²
VERANDAH	24.4m ²
LOFT	16.4m ²
TERRACE	24.4m ²
PERGOLA	40.4m ²

- 1 BEDROOM
- 2 BATHROOM
- 3 KITCHEN
- 4 DINING
- 5 LIVING
- 6 LAUNDRY
- 7 PANTRY
- 8 TERRACE & PERGOLA
- 9 VERANDAH
- 10 FRIDGE
- 11 ROBE
- 12 LOFT OVER (Shown Dashed)



Solstice House

Ideal for inner city development, dual occupancy, weekender or retirement home the Solstice House will maintain an **average temperature of 22°C all year round**, even on the longest and the shortest days of the year.



STANDARD INCLUSIONS

- Highly insulated sandwich constructed precast concrete walls.
- Highly insulated burnished and sealed concrete floors.
- Raked ceilings.
- Ceiling fans
- Fly screens
- Quality joinery, fittings and appliances throughout.

OPTIONAL EXTRAS

- Inslab heating to southern areas
- Solar chimneys
- Solar hot water system
- Northern steel pergola
- Southern verandah
- Rainwater tank,
- Photovoltaic system



**BUILDING PERFECT SOLUTIONS
THAT DON'T COST THE EARTH**



STRINE
ENVIRONMENTS

STRINE ENVIRONMENTS

Unit 4, 33 Lorn Road
Queanbeyan NSW 2620

P 02 6282 4877 **F** 02 6281 3159
E mail@strineenvironments.com.au
W strineenvironments.com.au